



Advantage

Display systems

Distribute by Advantage-design



Roll Up (retractable stand)



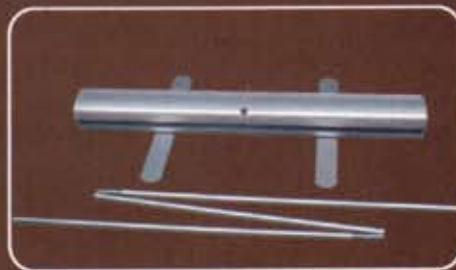
Econo-Roll Up (retractable stand)

Popular retractable stand great for occasional promotions or trade shows. Aluminum inner roller, Snap clip/3M Tape top support bar for easy installation. Sliver aluminum, Heavy protective bag, and nice finish.



Econo-Roll Up (retractable stand)

Code	Graphic Size	Pcs/ Carton	Out Carton Size(cm)	Gross Weight (kgs/carton)
RS-2L	0.60*1.60m	6	32*22*66	10.5
	0.80*2.00m	6	32*22*86	17
	0.85*2.00m	6	32*22*91	18.2
	0.90*2.00m	6	32*22*96	19.2
	1.00*2.00m	6	32*22*106	20
	1.20*2.00m(2pole)	6	32*22*126	24.8



Display System

Roll Up (retractable stand)



Econo-Roll Up (retractable stand)

Double-sided popular retractable stand,
Aluminum inner roller, Snap clip/3M.
Tape top support bar for easy installation.
Heavy protective bag, good finish.



RS-DL

Econo-Roll Up (retractable stand)

Code	Graphic Size	Pcs/ Carton	Out Carton Size(cm)	Gross Weight (kgs/carton)
RS-DL	0.85*2.00m	3	32*22*91	16.04
	1.00*2.00m	3	32*22*106	18
	1.20*2m(2pole)	3	32*22*126	21.3

Roll Up (retractable stand)

Stronger Roll Up

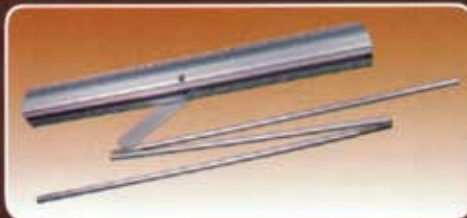
Improved from Econo-Roll Up, use thicker and stronger aluminum profiles, more stronger, more stable! Snap top bar, Padded protective bag!



Stronger Roll Up

Code	Graphic Size	Pcs/ Carton	Out Carton Size(cm)	Gross Weight (kgs/carton)
RS-L	0.85*2.00m	6	32*22*91	23.6
	1.00*2.00m	6	32*22*106	26.5
	1.20*2m(2pole)	6	32*22*126	31.5

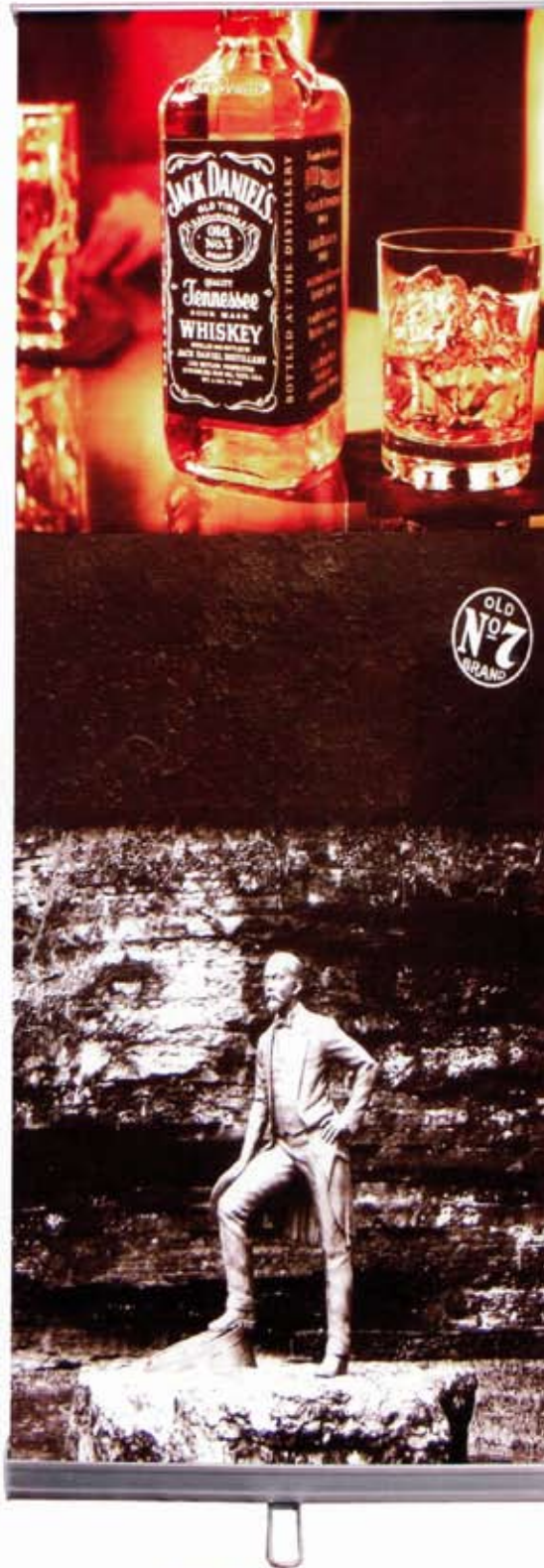
RS-L



Display System

Telescoping Pole Roll Up (height adjustable)

Economical, popular retractable stand. Telescoping pole provides adjustable height, Slip in top support bar for easy installation. Heavy protective bag, good finish.



RS-8L

Telescoping Pole Roll Up (height adjustable)

Code	Graphic Size (m)	Pcs/ Carton	Out Carton Size(cm)	Gross Weight (kgs/carton)
RS-8L	0.80*2.00m	6	32*22*86	17
	0.85*2.00m	6	32*22*91	18.5

Roll Up (retractable stand)

Display System

Roll Up (retractable stand)

Super-Roll Up

Deluxe, perfect exterior and quality.

6kgs net weight and foldout base provide extra support. Single side.



RU-S

Super-Roll Up

Code	Graphic Size (m)	Pcs/ Carton	Out Carton Size(cm)	Gross Weight (kgs/carton)
RU-S	0.82*2.00	4	29*54*98	25.6
	0.96*2.00	4	29*54*108	28.7
	1.16*2.20	4	29*54*128	33.4

Roll Up (retractable stand)



Super-Roll Up

Deluxe, perfect exterior and quality.

7kgs net weight and foldout base provide extra support. Double-sided.

Super-Roll Up

Code	Graphic Size (m)	Pcs/ Carton	Out Carton Size(cm)	Gross Weight (kgs/carton)
RU-D	0.82*2.00	4	29*54*98	29.3
	0.96*2.00	4	29*54*108	32.1
	1.16*2.20	4	29*54*128	37.4

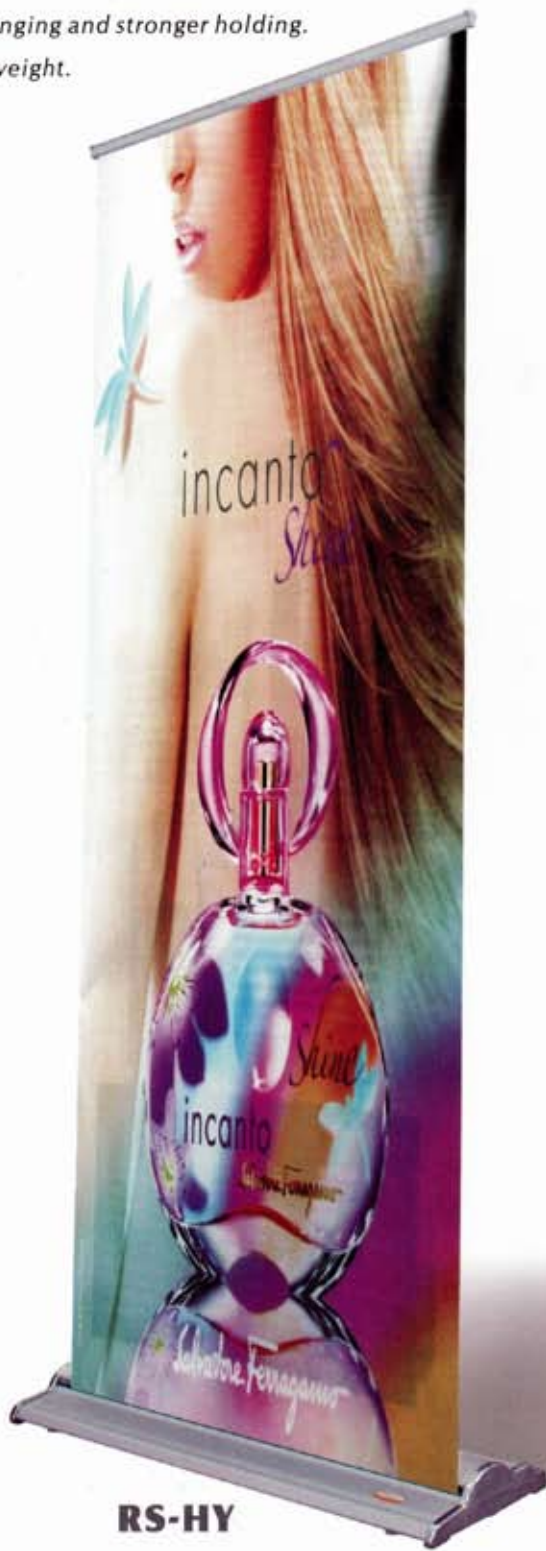


Display System

Snap Roll Up

Foldout bottom base. Snap-in profiles, both top and bottom, provide easy graphic changing and stronger holding. 6kgs gross weight.

Roll Up (retractable stand)



RS-HY

Snap Roll Up

Code	Graphic Size	Pcs/ Carton	Out Carton Size(cm)	Gross Weight (kgs/carton)
RS-HY	0.83*2.00m	4	30*53*98	22.4

Scrolling Screen

Ceiling Scrolling

Ceiling style, economic, smooth and quiet motion, light weight, accommodate big graphics with a total length of up to 4m, Clean rack optional.



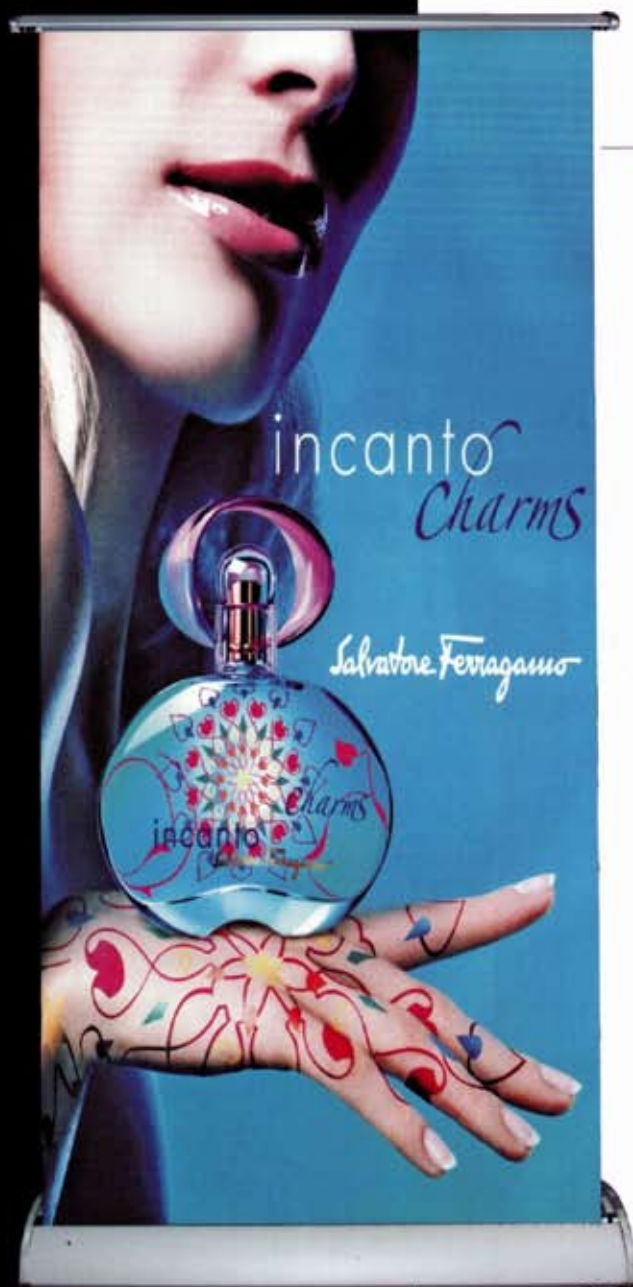
Ceiling Scrolling

Code	Graphic Size	Pcs/ Carton	Out Carton Size(cm)	Gross Weight (kgs/carton)
RU-CA	0.78*2.6~4.0m	9	36*40*97	26.3
	1.12*2.6~4.0m	3	36*40*128	36

RU-CA

Display System

Scrolling Screen



RU-SC



Floor Scrolling

Floor stand Scrolling banner stand, smooth and quiet motion, attract more attention and focus. Motor in base.



Pole insert here

Holder for spotlight



Adjust Image uprightness

Sensor



Magazine pocket (optional)

Light (optional)



Floor Scrolling

Code	Graphic Size	Pcs/ Carton	Out Carton Size(cm)	Gross Weight (kgs/carton)
RU-SC	0.78*4.07m	4	29*54*94	28.7

Other available size: 1.0*2.0m, 1.2*2.0m

Display Wall

Back Board (Flat)

Strong, stable, Economical Pop-up display, includes all parts; lamps, magnetic strips, channel bars, PVC panels, and wheeled carrying case. Perfect for frequent exhibitions or promotions. Economic oxford wheeled carrying case.

Back Board (Curved)

BB-R come with a Hard luxury wheeled carrying case, also a padded protective bag for the frame!



BB-R



Back Board

Code	Graphic Size	Pcs/ Carton	Out Carton Size(cm)	Gross Weight (kgs/carton)
BB-R	3*3 frame	1	46*46*96	24.5
	4*3 frame	1	46*46*91	28
BB-RHL	3*3 frame	1	42*71*100	35
	4*3 frame	1	42*71*100	38



Case for BB-RHL

Case for BB-R

Display System

Easy Back Board

Quick open and close with prints mounted by velcro. Wheeled carrying case. Lamps included. 4*3/2*2 frame available, flat style only! Light fabric prints only!

Velcro



BB-RF



Easy Back Board

Code	Graphic Size	Pcs/ Carton	Out Carton Size(cm)	Gross Weight (kgs/carton)
BB-RF (straight)	3*3 frame	1	46*46*96	16.5
	4*3 frame	1	46*46*96	19
	3*3 frame	1	46*46*96	16.5
BB-RF (Curve)	4*3 frame	1	46*46*96	19

Display Wall

Brochure Holder

Portable Brochure Holder

Steel frame, Chrome base, 3 or 4 levels in clear acrylic, easy to pull up and lock, packed in back-pack style oxford bag.



PMS-4

Portable Brochure Holder

Code	Graphic Size	Pcs/ Carton	Out Carton Size(cm)	Gross Weight (kgs/carton)
PMS-3	A4 *3	2	30*55*48	12.5
PMS-4	A4 *4	2	30*55*48	15



AMS

AMS-W

Z Brochure Holder

Z shape design provides 2-sided access. Acrylic panels. Easy to pull up and lock in place. Contained in a padded silver aluminum case.



Z Brochure Holder

Code	Graphic Size	Pcs/ Carton	Out Carton Size(cm)	Gross Weight (kgs/carton)
AMS	A4 *6	1	36*17*46	8.6
AMS-W				

Display System

Brochure Holder

L- Brochure Holder

Original from LB-B, fixed with the Net bags, installed in seconds.



PMS-LD



PMS-LS



L- Brochure Holder

Code	Graphic Size	Pcs/ Carton	Out Carton Size(cm)	Gross Weight (kgs/carton)
PMS-LS	A4 *4	10	56*23*58	15
PMS-LD	2 *A4 *4	10	56*23*58	18.5

Display System

Flying banner

Flying Banner

Flying shape attracts more attention, revolving function withstands strong winds, and large size shows more graphics, both outdoor and indoor use. 4 kind feet optional: cross feet; waterbag cross feet; screw feet, spike feet.



Small



Middle



Large



Flying Banner

Code	Graphic Size (m)	Pcs/ Carton	Out Carton Size(cm)	Gross Weight (kgs/carton)
FLB-S	1.821*0.942 (teardrop shape)	5	24*46*110	24.5
FLB-M	12.453*1.083 (teardrop shape)	5	24*46*128	25.5
FLB-L	3.053*1.084 (teardrop shape)	5	24*46*128	29



FLB-S

Display System

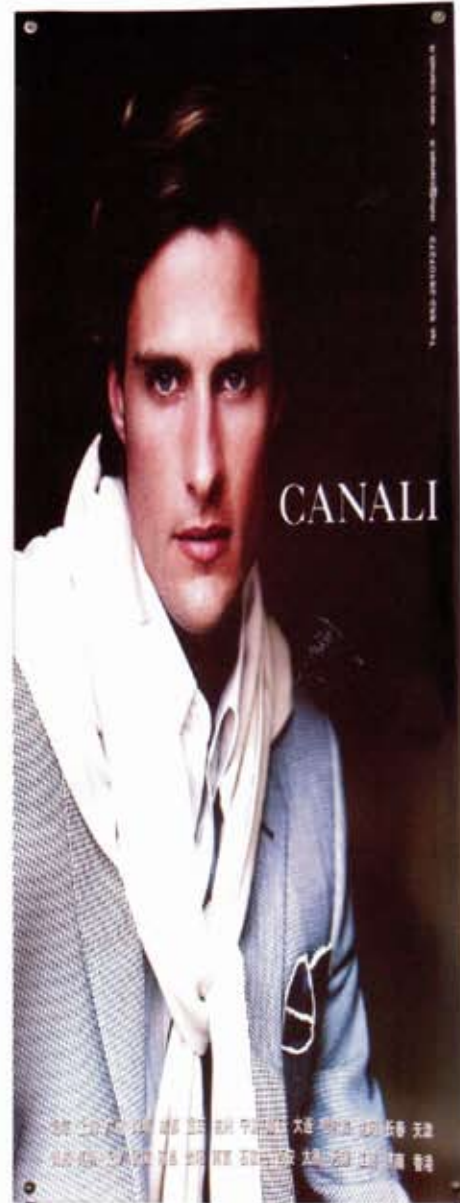
X-Banner Stand (Tri-stand)



X-Banner Stand (XB-C/XB-C1)

Economical and most selling tri-stand great for occasional promotion or trade show. spring bar provides flexible graphic size, Easy set up and install the graphics. 2 sizes available. Economical drawstring bag packing.

Code	Graphic Size (m)	Pcs/ Carton	Out Carton Size(cm)	Gross Weight (kgs/carton)
XB-C	0.8-1.2*1.8-2.0	5	22*38*140	13
XB-C1	0.5-0.6*1.55-1.6	5	22*38*140	13



XB-C



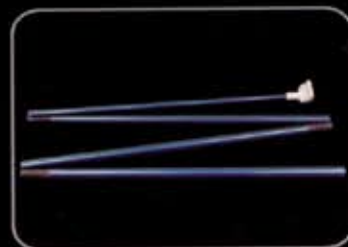
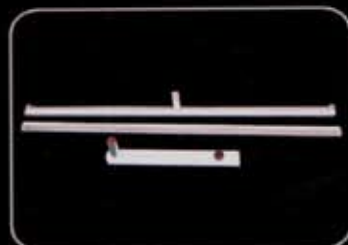
X-Banner Stand (XB-CL/XB-C1L)

Economical and highest selling tri-stand, great for occasional promotions or trade shows. Spring bar provides flexible graphic size, Easy set up and install the graphics. 2 sizes available. Padded carrying bag, good packing!

Code	Graphic Size (m)	Pcs/ Carton	Out Carton Size(cm)	Gross Weight (kgs/carton)
XB-CL	0.8-1.2*1.8-2.0	5	24*34*108	11.5
XB-C1L	0.5-0.6*1.55-1.6	5	24*34*108	11.5

Display System

L-Banner Stand



Standard L-Banner

L shape, sliver stronger support bar, elegant finish. Perfect for a limited space room, multiple units can be joined together with connectors.



LB-B

Standard L-Banner

Code	Graphic Size (m)	Pcs/ Carton	Out Carton Size(cm)	Gross Weight (kgs/carton)
LB-B	0.9*2.15	10	32*22*106	23.5

A Snap Frame Stand / Snap Frame

Alu-line Stand/A snap frame Stand

A-shaped snap-in frame with clear PET sheet protector. The fastest, easiest way to mount graphics, tool free. Heavyweight for both indoor and outdoor use. Double-sided!



ALS-205

Alu-line Stand/A snap frame Stand

Code	Graphic Size	Pcs/ Carton	Out Carton Size(cm)	Gross Weight (kgs/carton)
ALS-203	0.5*0.7m	1	56*10*110	7
ALS-204	0.6*0.85m	1	66*10*120	10
ALS-205	0.7*1m	1	76*10*140	12.5

Snap Frame

Tool free Snap-In frame, clear PET sheet protector, quick graphics changing. Can be mounted to a wall or hung.



SNP-A4



SNP-A2

Snap Frame

Code	Graphic Size	Pcs/ Carton	Out Carton Size(cm)	Gross Weight (kgs/carton)
SNP-A4	0.21*0.30m	5	29*14*38	19
SNP-A3	0.30*0.42m	5	36*48*14	22
SNP-A2	0.5*0.7m	5	56*14*76	10.5
SNP-A1	0.6*0.85m	5	66*14*91	12
SNP-A0	0.7*1m	5	76*14*106	19.4

Display System

Desktop series

Desktop Roll Up

A mini-size of Super-Roll Up(RU-S),
Desk/counter/tabletop use.



RS-DE



RS-2DE



Desktop Roll Up

Code	Graphic Size	Pcs/ Carton	Out Carton Size(cm)	Gross Weight (kgs/carton)
RS-DE	A4	24	30*27*38	9.2
	A3	24	30*37*38	11.8
RS-2DE	A4	24	30*27*38	12.5
	A3	24	30*37*38	16.5

Display System

Promotion Counter



PC-1

Plastic Promotion Counter

Strong Plastic counter, Great for temporary spot promotion. Only 8kgs but has great impact.



Plastic Promotion Counter

Code	Graphic Size	Pcs/ Carton	Out Carton Size(cm)	Gross Weight (kgs/carton)
PC-1	Top: 77*28cm Base: 163*85cm	1	12*88*88	11

Folding Promotion Counter

Folding frame(like backbord) with a top panel, quick opened and closed



PC-F



Folding Promotion Counter

Code	Graphic Size	Pcs/ Carton	Out Carton Size(cm)	Gross Weight (kgs/carton)
PC-F	198.5*94cm	1	103*16*68	16

Display System

Super Slim light-box

Super Slim Light Box (BOX-SL)

Extra thin backlit displays. T5 Fluorescent tubes in the frame are diffused across the clear acrylic face to evenly and consistently backlight the entire surface. Meant to be permanently mounted to interior walls. Silver aluminum frame is only 1.25" thick with a clear plexiglass front panel to protect your graphics. Custom size acceptable.



BOX-SL

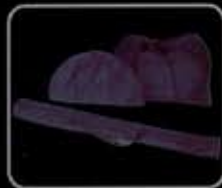


Super Slim Light Box (BOX-SL)

Code	Graphic Size (cm)	Pcs/ Carton	Out Carton Size (cm)	Gross Weight (kgs/carton)
BOX-SLA0	A0:92x122x3.3	2	18*100*131	44
BOX-SLA1	A1:66x91x3.3	5	36*75*101	55
BOX-SLA2	A2:48x61x3.3	10	70*59*70	60
BOX-SLA3	A3:36x48x3.3	10	70*44*57	35

Display System

Outdoor Water-tank series



Outdoor Flag Pole

Foldable water tank (80kgs) base provides extra support outdoors; the banner rotates with the wind, telescoping stand up to 5 meters tall. Great for big commercial campaigns or portable signs for your company.



WPS-GP

Outdoor Flag Pole

Code	Graphic Size (m)	Pcs/ Carton	Out Carton Size(cm)	Gross Weight (kgs/carton)
WPS-GP	4.10*1.10	1	38*43*85	11 for tank
	4.10*1.10	1	13*16*168	9 for Pole

Outdoor Water--tank series

Outdoor A Stand

With 2 water tank base, A shaped provides extra support outdoors; telescoping pole provides flexible size. Great for big commercial campaigns or portable signs for your company. Can be connected to form a long display wall.



WPS-AS

Outdoor A Stand

Code	Graphic Size (m)	Pcs/ Carton	Out Carton Size(cm)	Gross Weight (kgs/carton)
WPS-AS	2.00*2.50	2 set In one outer carton	Inner carton: 12*15*175(poles) 30*50*87(tanks) outer carton: 32*67*177	42.5



WPS-SF

Outdoor Snap Frame stand

With A heavy water tank base, 2 stronger spring legs, professional for out use. Snap-in frame, tool free. Double sided!



Outdoor Snap Frame stand

Code	Graphic Size (m)	Pcs/ Carton	Out Carton Size(cm)	Gross Weight (kgs/carton)
WPS-SF	2*0.58*0.83	1	23*65*106	28